

Material Integrity in Molded Plastic Gears and its
Dependence on Molding Practices

by: T. Vale, ABA-PGT, Inc.

American Gear Manufacturers Association



TECHNICAL PAPER

Material Integrity in Molded Plastic Gears and its Dependence on Molding Practices

Tim Vale, ABA-PGT, Inc.

[The statements and opinions contained herein are those of the author and should not be construed as an official action or opinion of the American Gear Manufacturers Association.]

Abstract

The quality of molded plastic gears is typically judged by dimensional feature measurements only. This practice overlooks potential deficiencies in the plastic injection molding process and its effect on the integrity of the plastic material. These deeper issues are often not given proper consideration usually until a related gear failure demands its study and evaluation. This paper identifies some of these oversights in the molding process, the resultant effect on the plastic material and discusses their likely effect on short and long term gear performance.

Copyright © 2007

American Gear Manufacturers Association
500 Montgomery Street, Suite 350
Alexandria, Virginia, 22314

October, 2007

ISBN: 978-1-55589-907-3

Material Integrity in Molded Plastic Gears and its Dependence on Molding Practices

by Tim Vale, ABA-PGT Inc., Manchester, CT

It is standard practice in the gear industry to define the quality of a gear based on physical measurement of size and form. This is never more evident than in the AGMA gear quality ratings where measured values of total composite error (TCE) and tooth to tooth error (TTE) are used to neatly categorize and rate the quality of a gear. Beyond that, a great deal of effort might also be placed on using more advanced metrology equipment to gather more and more information about the size and form of the gear. This could include using elemental inspection to get detailed information about the involute and lead of the gear, using optical or a coordinate measuring machine to define the form of the inner diameter (ID), the flatness of the part, the profile of other features on the gear or using a profilometer or other technique to quantify the surface finish of the gear teeth. This is all good information to have about your gear. In machined metal or plastic gears, if you have started with a quality piece of raw material, you can be confident that if physical measurements are repeatable and within specification, your gear supplier has done a fine job of supplying you a quality gear. With molded plastic gears, this practice of relying on physical measurements as proof of quality overlooks potential deficiencies in the injection molding process and the effect it may have on the integrity of the plastic material.

The scope of this paper is to spotlight these molding deficiencies and to discuss the hidden effects they can have on the end properties of your plastic gear. There is a lot of published data available on the physical properties of every type and grade of plastic imaginable. What is less available and often disregarded by both end users and molders of plastic gears is information on just how these published properties are affected by processing conditions during injection molding. When published data is compiled there is a certain amount of care that goes into assuring that test specimens have been molded using optimum molding conditions which will in turn yield the best physical properties. Optimum properties of the plastic material cannot be achieved with-

out optimum processing conditions. Proper part design plays a major role in getting the most out of your plastic material, but with all things equal, if proper care is not taken during molding, all of the up front analysis done by a gear designer can quickly become meaningless. In addition to reducing physical properties, poor molding will also create the conditions for failure modes that could not be predicted or accounted for by even the most prudent of designers.

It is also important to note here that there is no way around the fact that a high quality molded plastic gear starts with the design and construction of a high quality plastic gear mold. This mold shall always have proper cooling channels, venting, properly sized gates and runners, sufficient coring, sufficient ejection capabilities, quality mold surface finish, precision fits and tolerances, concentricity between mold components and proper steel selection. This paper will not focus on why those things are important or how they are achieved. Instead it will be assumed that a very sound mold with all of these considerations has been produced and is being used. This paper will describe the things that can go wrong regardless of the mold and part design if the gear molder is not disciplined and committed to molding a high quality gear from the inside out.

Crystallinity and shrinkage

When studying the relationship between processing and end properties of a molded gear, the two most basic fundamentals that need to be understood are that of crystallinity and shrinkage. For purposes of this paper, it is important to have a basic understanding of these for three reasons: 1) The amount of crystallinity in a semi-crystalline polymer has significant impact on the end properties of the plastic. 2) Improperly predicted shrinkage is often a key driver behind why a molder would choose to violate general good molding practice in an effort to get a part that meets the physical size requirements specified on the part drawing. 3) Shrinkage and crystal-

linity are both highly dependent on the process conditions ultimately controlled by the mold.

Most plastics fall neatly into one of two categories: amorphous or semi-crystalline. All plastics, regardless of their level of crystallinity are comprised of many polymer chains. With an amorphous material, the full length of all the polymer chains remains in a somewhat random state before, during, and after heating the material to the required processing temperature. The difference in the polymer at low temperature vs high temperature is that at higher temperature there is more space between the polymer chains allowing them to move more freely. See Figure 1. This increased free volume and heat energy is what eventually allows the plastic to flow and be injection molded. With a semi-crystalline material, you will find these same amorphous (random) bunches of polymer chains. However, in addition you will also find areas of tightly packed, regularly shaped crystalline structures called spherulites. These spherulites are made up of many sections of polymer chains called lamellae that have folded up upon themselves and are held tightly together due to intermolecular forces acting between the folded sections of polymer chain. See Figure 1.

This tight packing and intermolecular forces are what gives the semi-crystalline plastic (such as acetal or nylon) the properties that are desirable for gear applications. These include friction and wear properties, chemical resistance, and strength. Heating of a semi-crystalline material through its melt temperature effectively melts any crystalline structure that may have existed in the plastic pellets before processing causing the polymer chains to go back to a widely spaced random state very similar to an amorphous material at its processing temperature. It is upon cooling of the material back through its crystallization temperature that crystalline structures are formed once again. How quickly the polymer is taken from its melt temperature down through this crystallization temperature will determine both size and quantity of crystalline structures formed. So the resultant crystallinity of any molded gear is very much determined by the gear mold.

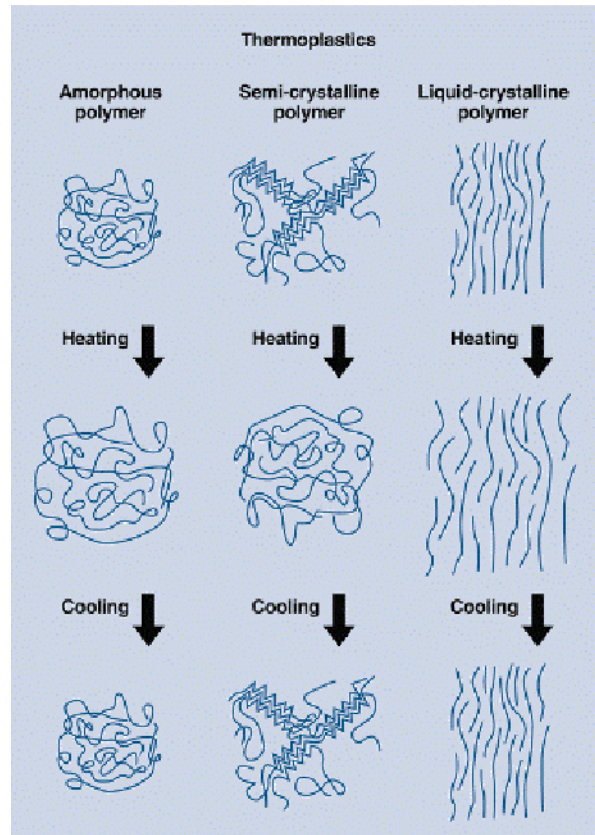


Figure 1. Amorphous vs semi-crystalline polymer chains
(courtesy DSM)

Mold shrinkage is the difference in size between a mold cavity and the molded product that is produced in that cavity. Most simply, shrinkage is a product of thermal expansion. Like most all materials, plastics will expand when heated and contract when cooled. Given the relatively high CTE of plastics (typically 5 – 25 x that of steel) and the high processing temperatures used during injection molding (typically 350°F – 700 °F above room temperature), properly predicting and managing this heating and cooling of the plastic during molding is critical in getting a high quality part. Plastic (with no fillers) shrinkages range from approximately 0.4% to 4% of the cavity dimensions depending on processing conditions and part geometry.

In addition to the shrinkage caused by thermal expansion, semi-crystalline materials exhibit additional shrinkage as the dense crystalline structures

are formed during cooling. This is the reason why semi-crystalline materials generally have higher shrink rates than amorphous materials. In Figure 2 the general way in which these two types of materials expand during heating and contract during cooling can be seen. For both amorphous and semi-crystalline materials there is a temperature above which the rate of expansion will increase. This happens at the point where there is sufficient free volume between polymer chains and the intermolecular forces between them becomes less of a factor in holding the chains close together. This graph is showing the glass transition temperature (T_g) of the amorphous material and the crystalline melt temperature (T_m) of the semi-crystalline material. Note: the very high spike (almost vertical line) for the semi-crystalline material shows the rapid expansion as crystals melt (left to right on the graph) and the rapid contraction as they are formed (right to left on the graph). This spike is exactly why semi-crystalline materials shrink more than amorphous materials. Graphs like these for plastics are generated using very slow rates of heating and cooling on a small sample of material. In the injection molding

of a typical gear, the part will have a comparatively large cross section and experiences a comparatively fast cool rate. Because of this, all or most areas of the part will not behave exactly as shown.

Shrinkage becomes variable and quality defects can result if care is not taken by the molder to minimize the amount of variation both across the length and width of the part and through the thickness of the part. Also note in the graph that the amount of shrinkage is also dependent on pressure. This is another variable controlled by the molder. Note: with machined plastic or metal gears, this process of expansion and contraction of the raw material has already happened in production of the gear blank itself and is therefore not a variable that requires consideration by the gear manufacturer. On the other hand, a plastics mold maker and molder have to have considerable experience with making plastic gears to understand fully how much shrinkage is going to occur and more specifically understand how shrinkage rates will vary across the length and width of a part as a result of the various geometries and wall thicknesses in the part.

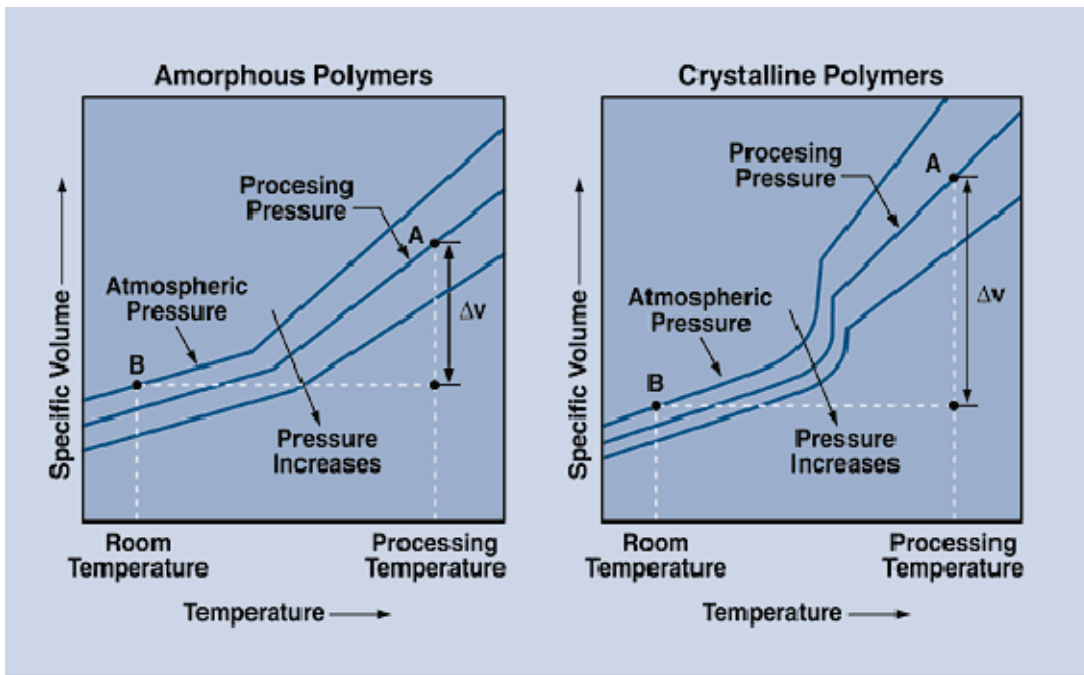


Figure 2. Specific volume vs temperature for amorphous and semi-crystalline polymers (courtesy DSM)

Material handling

Material suppliers are doing an increasingly good job at supplying a consistent high quality raw material to the gear molder for use in plastic gears. The material type, grade, supplier and percentage of regrind allowed are spelled out in black and white by the end user on their part drawing. What is not spelled out on the part drawing is exactly how the molder should handle this material once the bag gets opened. If molding resin is not handled in a clean organized fashion, there is risk of foreign matter other than the specified plastic making its way into the molded gear. This foreign matter could include tiny or not so tiny pieces of dirt, dust, fiber, cardboard, metal or plastic. Different and often incompatible plastic material can get introduced into the molding process either by cross contamination of the plastic pellets before molding or by residue left in the molding machine screw and barrel assembly from a prior molding run. If a substantial sized piece of this foreign matter makes its way into a high stress area of the gear it can act as a site for a crack to develop, propagate and ultimately fail.

A good gear molder shall always have proper procedures in place to keep the chance of this happening to an absolute minimum. These include general good housekeeping practices around the molding machines and material handling areas along with regular cleaning of screw and barrel assemblies. Rigorous procedures for identifying materials and for tracking material lot numbers are very important. Use of a closed central material feeding system for feeding material to the molding machines will greatly minimize the risk of contaminating molding materials. This eliminates having multiple bags or boxes of material opened near the molding machine it is intended to run in as well as the surrounding molding machines where it is not intended to run in. It is also important to note that the contamination is not always going to be a different color than the molding material, so it may not get detected through normal visual inspection. This fact makes it all the more important that gears are sourced with a molder whose standard practices can be trusted to protect your product.

Regrind

By definition, a thermoplastic material is one that can be melted, formed (through cooling), re-melted and re-formed again. This characteristic of plastics is taken advantage of by molders and end users by allowing molded parts and runners to be ground up and recycled into new molded products. Using this recycled material (regrind) is a very good thing for reasons of cost and conservation. And if the quality of the regrind is controlled properly by the molder, there is very little reason for not using some percentage of regrind in your molded gears.

When someone in the molding industry speaks of regrind quality, they are usually referring to the consistency of the granules that are produced after parts or runners are reground. A consistent granule size with a minimum amount of fines (small dust or flake like particles) or excessively long granules is desired for a few reasons. A consistent granule size will help to ensure uniform melting in the molding process the next time the regrind gets used. Non-uniform melting results in the molten plastic having inconsistent viscosity which in turn can result in inconsistent dimensions in your molded part. Fines in the regrind can lead to black specking in a light colored material due to the fact that the small particles melt sooner and may degrade during processing. Since dimensions and black specking can be detected through physical and visual inspection, there is no need to discuss any further in this paper.

Of even greater importance than granule size is the regrind cleanliness (lack of contaminants) and the controlled exposure to heat and shear. It is during the process of creating and using regrind that contamination has the best chance of being introduced into the molding process. For this reason, everything stated in the earlier section on material handling applies in particular to the regrind. Also many molders do not keep sufficient tabs on the number of heat histories that the regrind has seen and will not discard material after an acceptable number has been reached. This can result in material properties that are greatly reduced due to the excessive amounts of shear and heat seen by the plastic. A gear could be produced that meets print specifications (dimensions and material call out) and has the

same appearance but could fail due to reduced physical properties.

If regrind is properly handled, plastic parts made from unfilled plastics can typically be molded and re-molded at least five times with virtually no drop in material properties. See Table 1 showing the regrind properties of Celcon M90 acetal material which is one of the most common plastic gear materials in use today. This information should not be construed to say that plastic can be reground and reused indefinitely. With each remolding, a higher percentage of polymer chains will have been reduced in length or degraded. Polymer chain length or molecular weight is directly related to key material properties such as tensile strength, flexural strength, fatigue strength and creep resistance. When the percentage reaches a critical limit, more significant drops in properties can be expected. For materials with fillers it is more important to keep the percentage of regrind or the number of times the material gets reground (referred to as number of heat histories, generations of regrind, or regrind pass) to an amount suitable for the requirements of the application. This is mostly due to the fact that the average fiber length will get reduced each time the material gets reground in the grinder, sheared in the molding machine barrel and sheared passing through the gates of the mold cavity.

It is difficult to find published data on regrind percentage properties, and even if it was readily available, it would be difficult for a designer to use confidently because so much of the properties are dependent on how the molder chooses to handle the regrind. As a result, gear designers often specify no or low regrind percentages allowed in their plastic gears. A better option is to find a molder committed to the highest quality regrind and to do

some up front testing with gears containing varying percentages to prove that the material will have the properties required for your application. A molder with dedicated press side granulators vs. large scale bulk grinders will be more successful at keeping regrind clean and manageable. Finally and most importantly would be to know that the gear molder has specific procedures in place for tracking the number of heat histories seen by the regrind and is discarding the material after a maximum has been reached.

Moisture

Many plastics including nylon are hygroscopic, because parts of the polymer chain are attracted to water molecules, often through hydrogen bonding. This attraction to water may cause a plastic to swell a little bit, but by itself is not necessarily a bad thing. In fact in the case of nylon this little bit of water that gets into the plastic actually helps some properties, such as impact strength and toughness. The problem really occurs when certain plastics and water are brought together under high heat and high temperature, like in the injection molding process. Nylons, polyesters, polycarbonates and polyurethanes are examples of plastics that can undergo degradation as a result of moisture in the pellets. Because of this, many plastics will have drying requirements to drive off this water prior to processing. If proper drying does not take place, hydrolytic degradation can take place causing polymer chains to breakdown resulting in a significant reduction in the physical properties of the plastic. There may be some visible signs in a molded gear indicating moisture was present in the plastic pellets, but not always and not with all materials. The end result could be a hidden defect that does not get detected until a gear gets into the field.

Table 1. Celcon M90 regrind study
(courtesy Ticona)

	Tensile modulus (Kpsi)	Tensile stress at yield (Kpsi)	Flexural modulus (Kpsi)	Flexural stress (Kpsi)
Virgin resin	381	8.687	367	12.34
3rd molding	367	8.678	357	12.08
5th molding	372	8.684	362	12.14

On the other end of the spectrum would be over-drying of the plastic resin through either excessive time or temperature. For most materials, the material manufacturer will recommend that most but not all of the moisture be removed prior to processing. For nylon, that ideal range is generally understood to be 0.08% – 0.2% moisture content. It can be argued as to whether removing too much moisture by itself has a harmful effect on the end product as the end product itself will pick up any required moisture after molding in order for the product to avoid becoming possibly too brittle. Removal of too much moisture generally shows its negative effects during processing as the material generally becomes more stiff and viscous. The bigger problem is that prolonged exposure time at elevated temperatures usually results in oxidation and subsequent degradation of the plastic.

To avoid a gear with poor physical properties getting into the field, it is critical first and foremost that the gear molder has proper drying equipment. The equipment must accurately control temperature, airflow and dew point of the drying air. The equipment must utilize a desiccant bed for removing the moisture that gets driven out of the plastic with time and temperature. The equipment must be properly sized to avoid under drying or thermally degrading the plastic. Throughput of the molding pellets through the molding machine (or machines in the case of a central drying system) should be calculated and time, temperature adjusted to the material manufacturers recommended specifications. Additionally, moisture analyzing equipment can be used to regularly sample the moisture levels of the molding pellets.

Thermal degradation

Thermal degradation can also take place in the molding machine barrel. This degradation is also time and temperature dependent. To avoid excessive time in the barrel, the molding machine needs to be properly sized compared to the size of the molded shot. The easiest way to assure that exposure time is not excessive is to follow the second half of the 80/20 rule where the shot (part and runner) size is not to be less than 20% of the shot capacity of the molding machine barrel. So even at the longest of cycle times, residence time will be less than 5 minutes. Most materials, if the material suppliers recommended processing temperatures are not exceeded, will not degrade in that amount of

time. When hot runner molds are used, the extra residence time in the manifold must also be considered. Thermal degradation due to residence time can also occur if the molding machine is left idle at processing temperatures for extended amounts of time before parts are molded and collected. If the gear molder uses barrel temperatures beyond what is recommended by the material supplier, the amount of time the plastic can stay at that temperature without degrading is greatly reduced. If thermal degradation occurs, the result will be a molded gear that is excessively brittle (poor impact strength) and has lower strength than expected. In particular, gears that run at high speeds or stop and start quickly under load are susceptible to impact failure.

Armed with this information, the end user of the gear should be sure to know the molding machine size that the gear molder will be using. Be careful to avoid a situation where your gears can get qualified (initial product testing and tool approval) in a properly sized molding machine and then switched into an oversized machine when the tool is run during normal production. Always ask your gear molder for the machine and processing information used to produce your parts.

Molded in stress

All injection molded parts have some level of molded in stress. Molded in stress occurs as a result of the polymer chains being frozen in anything but their preferred perfectly random state. The injection molding process will always impart some degree of stress or orientation into the plastic during the fill and pack phase. Once the plastic material makes contact with the much cooler surface of the mold, some portion of the polymer chains will quickly begin to cool and get frozen in a non-random (highly orientated) state. The polymer trying to get back to its preferred state is the source of the stress. Differential cooling rates across the thickness of the part will create a similar condition that results in molded in stress. Crystalline materials with their high shrink rates are the most susceptible to high levels of molded in stress. Excessive molded in stress is most commonly a result of excessive shear, excessive pressures or cold molds used in processing the part.

This excessive molded in stress combined with the normal stress put on a gear tooth during operation, could contribute to premature failure of the molded gear. Excessive molded in stress will also leave the

gear susceptible to twisting and or warping if the temperature of the gear in service is high enough to allow the polymer chains to begin to move. In other words the gear could be flat at the time of first inspection but end up warped later on when in use. Localized stress areas in the gear are sites where environmental stress cracking (ESC) can occur. ESC is the premature initiation of cracking and embrittlement of a plastic due to the simultaneous action of stress and strain and contact with specific fluids.

Excessive molded in stress is not visible to the naked eye. This phenomenon can be shown with the use of cross polarized light with one filter placed on either side of the molded sample and light passed through all three pieces. The areas where the polymer chains have remained in a more random state will appear black while the areas of high stress and orientation will exhibit a multi-colored pattern due to birefringence as the polarized light passes through the molded sample.

See Figure 3 showing two 24 DP, 36 tooth gears molded using polycarbonate in the same mold with different processing conditions. Polycarbonate was used because the transparency allowed for evaluation using polarized light. Any effects seen in the low shrink polycarbonate gear can be expected to be further exaggerated in a high shrink semi-crystalline gear. The first gear was molded using a high 200°F mold with a moderate pack pressure of 8,000 psi. The second gear was molded using a low 100°F mold and a relatively high pack pressure of 14,500 psi. In the first gear, the area of high stress is mostly localized along the centerline of the tooth. This is indicative of the normal stresses generated as a result of differential shrinkage between the plastic closest to the mold surface and the more insulated plastic at the center of the part. It can be seen in the second gear that the area of high stress

extends further out towards the edge of the gear teeth and is also present in the root area between teeth. This additional stress, particularly at the root, could lead to problems when stress and heat is generated during gear meshing under load.

Process conditions, such as low mold temperature and excessive pressures, that contribute to molded in stress may get used by the gear molder to try to compensate for a mold cavity that is too small due to incorrect prediction of shrinkage by the molder or mold maker. Additionally, low mold temperature might get used in an effort to reduce cycle time (increase production yield). Be sure to use a gear molder who has a deep history and understanding of exactly how gear materials will shrink. Also be sure that the gear molder understands the importance of proper process conditions and will build or adjust a mold based upon a good molding process rather than cheating on the process conditions to compensate for in incorrectly sized mold.

Voids

Voids are similar to molded in stress in that they are a result of differential cooling rates across the thickness of a molded part. The outer skin of the molded part that is in contact with the mold cavity wall will cool quickly while the inner section cools at a slower rate. This quick cooling at the wall freezes the material in position near the cavity wall while the inner material continues to shrink and experience much higher contraction. This can create a vacuum between the inner and outer layers of the part. If additional plastic material cannot be fed into this center section of the part during the packing phase of molding, a void will result. In many cases a void in a plastic part, particularly if it is small, will be harmless and will have no effect on the end properties of the product. If the void is large enough or ends up in a high stress area of the part, a failure could occur.

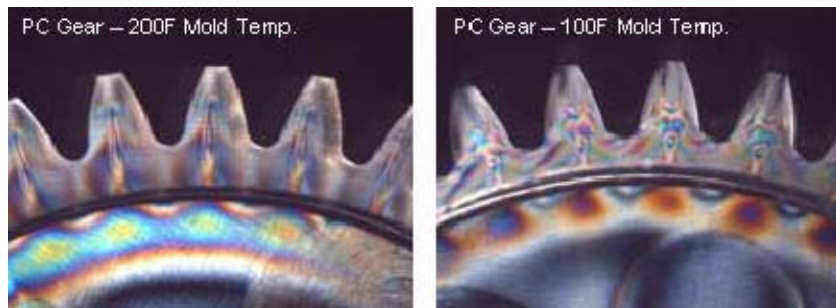


Figure 3. Molded in stress in polycarbonate gears

As shown earlier in Figure 2, crystalline materials experience a large volumetric change as the part cools below the melt temperature. This means that crystalline materials often used in gear applications are much more likely to have voids. In anticipation of this, the molder must be sure to have sufficient pack times and pressures in the molding process. Mold temperatures should be kept high enough to promote a more even cooling rate across the part width and to allow material to flow to the center sections of the part for as long as possible.

Weak weld lines

A weld line on an injection molded plastic part is formed where two flow fronts meet and join. Weld lines are formed when a part has multiple gates, but can also be seen where a single flow front is forced to split as it molds around an internal feature in the mold cavity like the core pin that forms the ID. The type of weld line resulting from the flow front splitting is sometimes referred to as a meld line. Weld lines are all but guaranteed in plastic molded gears, regardless if one gate or multiple gates gets used. The tensile strength of the plastic material across a weld line is always going to be weaker than the same material without a weld line. Slight cooling and orientation at the flow front prevent the polymer chains in one flow front from becoming completely interweaved with polymer chains from the opposing flow front. The weakening effect of weld lines is greatest when molding plastics that have fiber fillers. The first reason is that there are fewer polymer chains available to become interweaved at the flow front (a 30% fiber filled plastic has that much fewer polymer chains at the flow front). The second reason is that orientation of the fibers at the flow fronts results in fibers mostly running parallel to one another. These parallel fibers, which offer little strength benefit, are less likely to cross over to the adjoining flow front and provide reinforcement at the weld line. Processing aids or other additives incorporated into a plastic can further weaken weld lines as these tend to migrate out to the surface of the flow fronts acting as a barrier between the polymer chains.

In some applications, a part design or gate locations in the mold can be modified to make sure weld line ends up in a low stress location of the part where this weakening effect is not a factor. For a molded plastic gear, where there are gear teeth around the full 360 degrees of the part and where there is an ID in the center of the part, it is not really possible to move

the weld line to a location where it doesn't matter. This is especially true since plastic gears are generally fine pitched and keeping the weld line in the center of a tooth as opposed to the root would not be possible. Many plastic gears are press fit onto shafts and therefore require good hoop strength around the ID. The splitting of the plastic hub is a common failure mode where weak weld lines exist. This splitting of the plastic hub will very often take place long after the gear has been press fit onto its shaft. The reason is that in order for a plastic material to have good resistance to creep, there must be good interweaving of polymer chains.

This leaves the only defense in the hands of the molder to do what is necessary to produce a weld line that is as strong as possible. Producing a strong weld line requires time, temperature and pressure. The polymer chains need sufficient time to interweave before cooling to the point where the chains become immobile. This time is created by keeping the temperature of the melt and mold higher for longer. Pressure in the melt can also help in forcing the two flow fronts together. A gear molder who chooses to run temperatures of the melt and mold as low as possible to speed up the cycle or increase part dimensions will seriously compromise the strength of the molded gear.

Low crystallinity

The two most common plastic gear materials in use today are acetal and nylon. Both of these are semi-crystalline materials that require crystallinity to achieve their best physical properties. Acetal is a highly crystalline material with a very flexible molecular backbone that allows for quick crystallization. Acetal crystalline content can typically range from 75% to 85%. Nylons (like a nylon 6/6) can have crystalline contents that range between as low as 10% up to roughly 60% depending on molding conditions and part geometry.

Up to this point in this paper, it has been discussed how a molder can damage the plastic or create a physical defect in the molded part. With crystallinity, the molder is given the power to effectively custom-make the plastic into something it is or is not intended to be. It was discussed in the earlier section on crystallinity that above the melt temperature of the polymer, the polymer is essentially 100% amorphous. It is upon cooling that the crystalline structures are formed. How long the plastic dwells at higher temperatures before freezing will determine how crystalline the plastic becomes. This dwell time

for any given part is dictated by cooling rate which is most heavily influenced by mold temperature.

Material suppliers give a recommended mold temperature range to the molder armed with the knowledge of the temperature at which optimum crystallinity (size and quantity) occurs. In the case of nylon, the acceptable range may be fairly wide given that you can make a good part at the lower end of the temperature range, it will just be a generally softer and tougher material given the higher amorphous content in the material. In general for gearing applications, tensile strength, flexural strength and hardness are most important so a mold temperature on the higher end of the range should be used.

Figure 4 shows microtomed section views of a nylon 6/6 gear molded with both low mold (100°F) and melt (540°F) temperatures. This combination results in a gear with a lower and much less homogeneous crystalline content than what is possible in nylon 6/6. Note in the first photo of Figure 4 where very clearly defined flow lines (both light and dark) can be seen throughout the gear. Large spherulites are formed along the light colored lines. This is shown very clearly under higher magnification in the third photo of Figure 4 where very large spherulites (as large as 0.003 in.) can be seen among a sea of

smaller but still varying sized spherulites. The darker lines seen are areas of low or no crystallinity. This inconsistent morphology results in a material with varying properties throughout and also results in weak boundaries between the larger and smaller spherulites. Many properties such as chemical resistance, crack resistance, hardness and wear resistance can be compromised in a gear molded under these conditions. Also of note is the relatively thick amorphous skin seen in this gear which measures approximately 0.004 in.. Because hardness and wear resistance are properties dependent on crystallinity, this particular gear could wear deeper and faster than a nylon 6/6 gear molded with higher mold and melt temperatures.

Figure 5 shows microtomed section views of a nylon 6/6 gear molded with both high mold (200°F) and melt (570°F) temperatures. This gear shows a higher and much more consistent crystalline content than the one molded with lower mold and melt temperatures. The spherulites are tightly packed and are a consistent size of about 0.0003 - 0.0006 in.. This will result in higher and more consistent material properties. The amorphous skin is comparatively thin at about 0.0006 in. which should result in less wear.

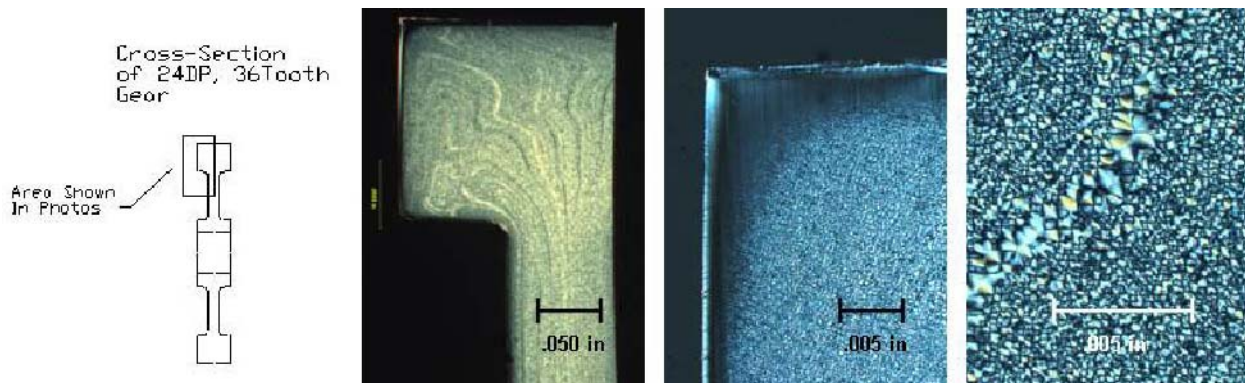


Figure 4. Nylon gear crystalline structure 100°F mold, 540°F melt

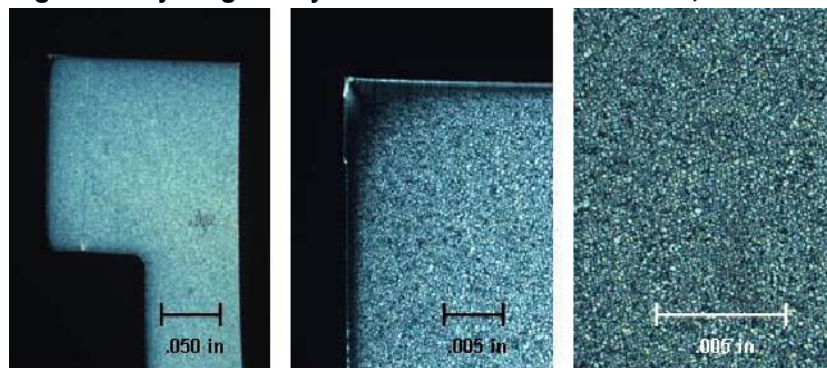


Figure 5. Nylon gear crystalline structure 200°F mold, 570°F melt

Post mold shrinkage

So far in this paper a number of problems that result from molders using excessively low mold temperatures have been discussed. These included voids, molded in stress and low crystallinity. There is one more very important problem that can have very big consequences in terms of how a molded gear will function in service.

Post mold shrinkage is when a molded part continues to shrink well after the part has been molded and cooled down to room temperature. For most all molded plastic parts, there is some amount of stress relief and shrinkage that occurs over the first 24 hours or so after molding. This is generally understood and is not a problem to deal with. It is the shrinkage that can occur weeks and months later that spurs the conversation of post mold shrinkage.

As was stated in the earlier section on molded in stress, if polymer chains are frozen in a non-random state, internal stresses result inside of the material. Polymer chains will continue to try to move to the preferred random state. Note: even though a plastic may be a solid at room temperature, polymer chains still have some amount of mobility as long as the temperature is above the T_g of the material. Acetal has a T_g of 9°F which means that even at room temperature the polymer chains have some mobility. This mobility, albeit minimal, allows the material to continue to shrink and stress relieve long after molding. Nylon has a T_g somewhere between 70–140°F (depending on how much moisture it has absorbed) which means nylon will experience overall less post mold shrinkage and it will usually require higher than room temperatures to start to hap-

pen. For both acetal and nylon, post mold shrinkage increases quickly as the service temperature increases.

Figure 6 below shows post mold shrinkage vs. exposure temperature for acetal molded at various mold temperatures. It is easily seen that post mold shrinkage is much higher for parts molded with a colder mold. A cold mold restricts initial plastic shrinkage as the molded part gets frozen into a larger, more highly stressed form (the shrinkage that needs to happen does not happen initially). On the contrary, a hotter mold allows shrinkage to occur more naturally resulting in a smaller, less stressed molded part (the shrinkage happens now instead of later when an end user may not expect it). Because of post mold shrinkage, a gear could be molded that meets all physical measurements of size and form at the time of first inspection. If measured again many weeks later, especially if the gear was exposed to higher temperatures, it could measure well out of tolerance.

Table 2 demonstrates what the effect might be on a typical plastic gear's dimensions when exposed to 150°F for 1000 hours. A gear that measures nominal for all dimensions at the time of molding can end up being out of spec. by 0.0005 in. on the gear test radius (GTR) and 0.0014 in. on the OD when a 200 °F mold gets used and end up being out of spec. by 0.002 in. on GTR and 0.005 in. for OD when a colder 100°F degree mold gets used. This will translate into reduced contact ratios and increased backlash. It is also very possible to have a gear that was flat and round at the time of initial inspection become warped or out of round as a result of excessive post mold shrinkage.

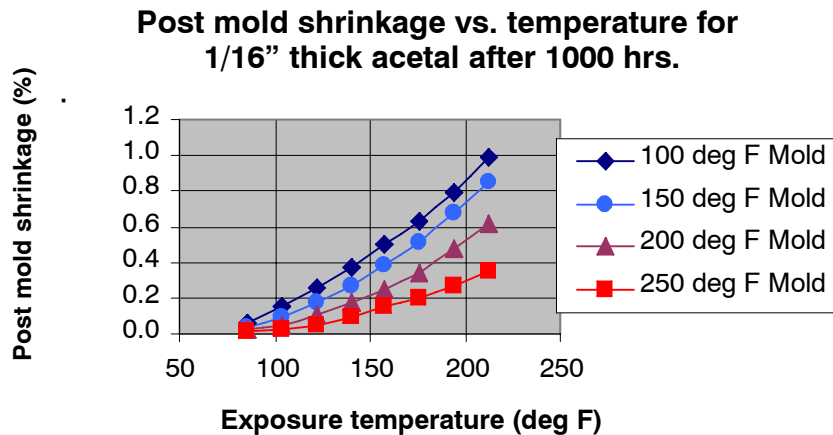


Figure 6. Post mold shrinkage of acetal
(taken from DuPont molding guide)

Table 2. Acetal gear dimensions with post mold shrinkage

	Print specs	As molded	Post mold shrink (1000 hours at 150°F)	
			200 °F mold	100 °F mold
number of teeth	36			
diametral pitch	24		24.05	24.11
pressure angle	20			
pitch circle diameter (ref.)	1.5000	1.5000	1.4968	1.4934
circ tooth thick max	0.0655	0.0650	0.0648	0.0647
circ tooth thick min	0.0645			
gear test radius max	0.7509	0.7500	0.7486	0.7471
gear test radius min	0.7477	0.7486	0.7472	0.7457
TCE	0.0019	0.0014		
TTE	0.0008	0.0005		
OD max	1.5853	1.5833	1.5799	1.5763
OD min	1.5813			
* Contact Ratio		1.552	1.477	1.398
*Backlash		0.0054	0.0079	0.0106

* Contact ratio and backlash calculated based on meshing with 36T, 24DP standard gear at 1.506 in. C-C distance

The best way to minimize these effects of post mold shrinkage is to minimize stresses during molding (minimize shear and avoid excessive pack pressures) and to use a sufficiently high mold temperature.

Conclusions

It is understandable how a molder would knowingly or unknowingly move to using process conditions that produce a part more prone to failure than a part molded at optimum process conditions. The traditional gauge of quality, physical measured dimensions, tells the molder that if the part measures good, it is a good part. A good gear molder should know that there is more to quality than what meets the eye.

The goal of this paper was to provide knowledge to both end users and molders of plastic gears on the crucial role that the molder has in determining the final quality of a plastic molded gear. The end user

should use this knowledge to make the best decision when choosing a gear molder. The decision process should explore the molder’s systems, procedures, equipment, and experience in molding high quality plastic gears. This same knowledge then needs to be used by the gear molder to ensure that decisions regarding the molding process and material handling are made with the end properties of the molded gear as priority number one. Priority number two should be molding parts that meet print specifications for dimensions. If priority number one and priority number two cannot be achieved simultaneously while molding at a profitable cycle time, then some important decisions need to be made. The decisions, if made properly, should result in having an injection mold that was built around a good process and not the other way around.

Acknowledgements

Bill Stec - Columbia Station, OH – microtome and cross polarized photography